

## Box Properties

--Description--

Name:

Type: Closed Box

Shape: Prism, square

--Box Parameters--

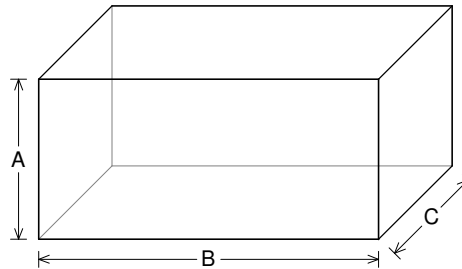
Vb = 3 cu.ft

V(total) = 3.361 cu.ft

Qtc = 1.126

F3 = 40.39 Hz

Fill = none



--External Dimensions--

A = 16 in

B = 34 in

C = 13.83 in

--Internal Dimensions--

A = 14.5 in

B = 32.5 in

C = 12.33 in

--Wall Thickness--

Front = 0.75 in

Side = 0.75 in

## Driver Properties

--Description--

Name: SEX 15 D4

Type: Standard one-way driver

Company: RE Audio (2015)

--Configuration--

**No. of Drivers = 2**

Mounting = Standard

Wiring = Parallel

Drivers sum coherently = Yes

Dual voice coils = parallel

--Driver Parameters--

Fs = 31.53 Hz

Qms = 6.094

Vas = 2.527 cu.ft [5.053]

Xmax = 1.1 in

Sd = 127 sq.in [254]

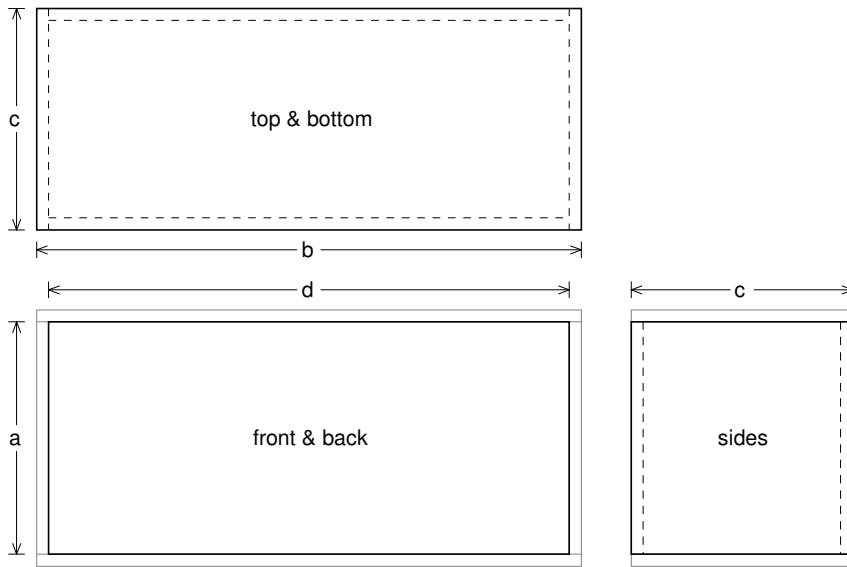
Qes = 0.839

Re = 1.384 ohms [0.692]

Le = 1.273 mH [0.636]

Z = 1.66 ohms [0.83]

Pe = 750 watts [1500]



### Box Parts

Box Shape: Square Prism

1 Top, 1 Bottom: depth (c) = 13.83 in  
width (b) = 34, thickness = 0.75 in

1 Front, 1 Back: height (a) = 14.5 in  
width (d) = 32.5, thickness = 0.75 in

2 Sides: height (a) = 14.5 in  
depth (c) = 13.83, thickness = 0.75 in

--Driver Mounting--

Mounting: Front

Aim: All drivers face same direction



### Wiring Diagram

