



## Box Properties

### --Description--

Name:

Type: Vented Box

Shape: Prism, square

### --Box Parameters--

Vb = 3 cu.ft

V(total) = 3.361 cu.ft

Fb = 40.45 Hz

F3 = 30.76 Hz

Fill = none

### --Vents--

No. of Vents = 1

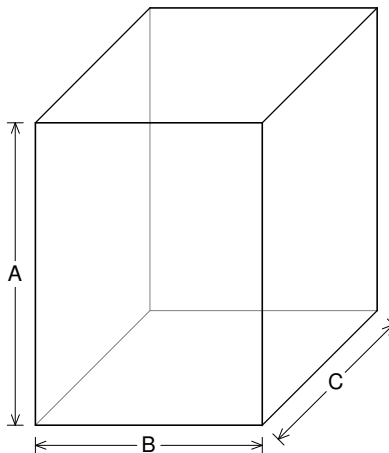
Vent shape = rectangle

Vent ends = one flush

Hv = 2 in

Wv = 10 in

Lv = 8.5 in



### --External Dimensions--

A = 24 in

B = 18 in

C = 17.15 in

### --Internal Dimensions--

A = 22.5 in

B = 16.5 in

C = 15.65 in

### --Wall Thickness--

Front = 0.75 in

Side = 0.75 in

## Driver Properties

### --Description--

Name: SEX 15 D4

Type: Standard one-way driver

Company: RE Audio (2015)

### --Configuration--

#### No. of Drivers = 1

Dual voice coils = parallel

### --Driver Parameters--

Fs = 31.53 Hz

Qms = 6.094

Vas = 2.527 cu.ft

Xmax = 1.1 in

Sd = 127 sq.in

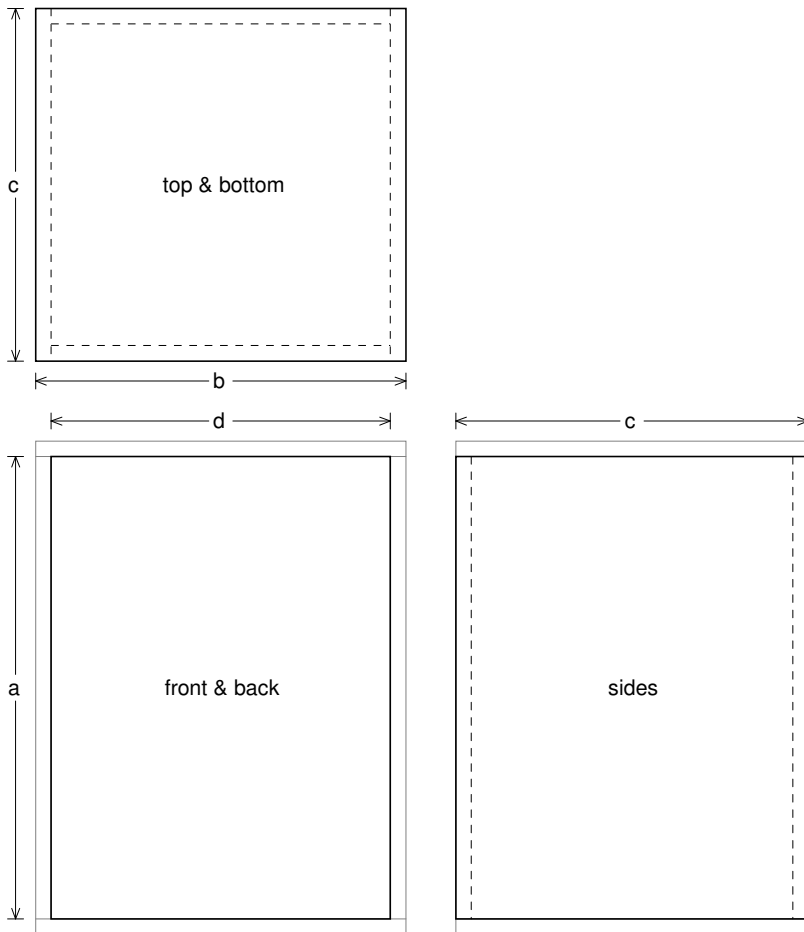
Qes = 0.839

Re = 1.384 ohms

Le = 1.273 mH

Z = 1.66 ohms

Pe = 750 watts



**Box Parts**

Box Shape: Square Prism

1 Top, 1 Bottom: depth (c) = 17.15 in  
width (b) = 18, thickness = 0.75 in

1 Front, 1 Back: height (a) = 22.5 in  
width (d) = 16.5, thickness = 0.75 in

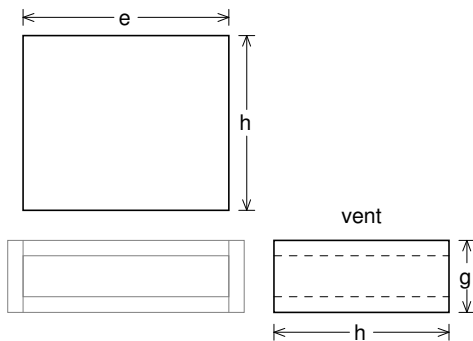
2 Sides: height (a) = 22.5 in  
depth (c) = 17.15, thickness = 0.75 in

--Driver Mounting--  
Mounting: Front

--Vent Parts--

1 Top, 1 Bottom:  
width (e) = 10, length (h) = 8.5 in  
thickness = 0.75 in

2 Sides:  
height (g) = 3.5, length (h) = 8.5 in  
thickness = 0.75 in





### Wiring Diagram

