



Box Properties

--Description--

Name:

Type: Vented Box

Shape: Prism, square

--Box Parameters--

Vb = 1.2 cu.ft

V(total) = 1.373 cu.ft

Fb = 36.97 Hz

F3 = 31.18 Hz

Fill = none

--Vents--

No. of Vents = 1

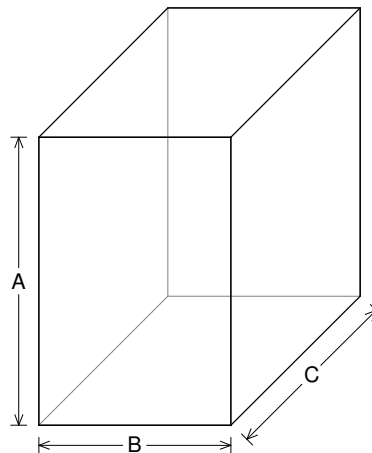
Vent shape = rectangle

Vent ends = one flush

Hv = 1.5 in

Wv = 4 in

Lv = 8.5 in



--External Dimensions--

A = 18 in

B = 12 in

C = 15.2 in

--Internal Dimensions--

A = 16.5 in

B = 10.5 in

C = 13.7 in

--Wall Thickness--

Front = 0.75 in

Side = 0.75 in

Driver Properties

--Description--

Name: SXX 10 D4

Type: Standard one-way driver

Company: RE Audio (2015)

--Configuration--

No. of Drivers = 1

Dual voice coils = parallel

--Driver Parameters--

Fs = 55.41 Hz

Qms = 9.922

Vas = 0.203 cu.ft

Xmax = 1.1 in

Sd = 50.17 sq.in

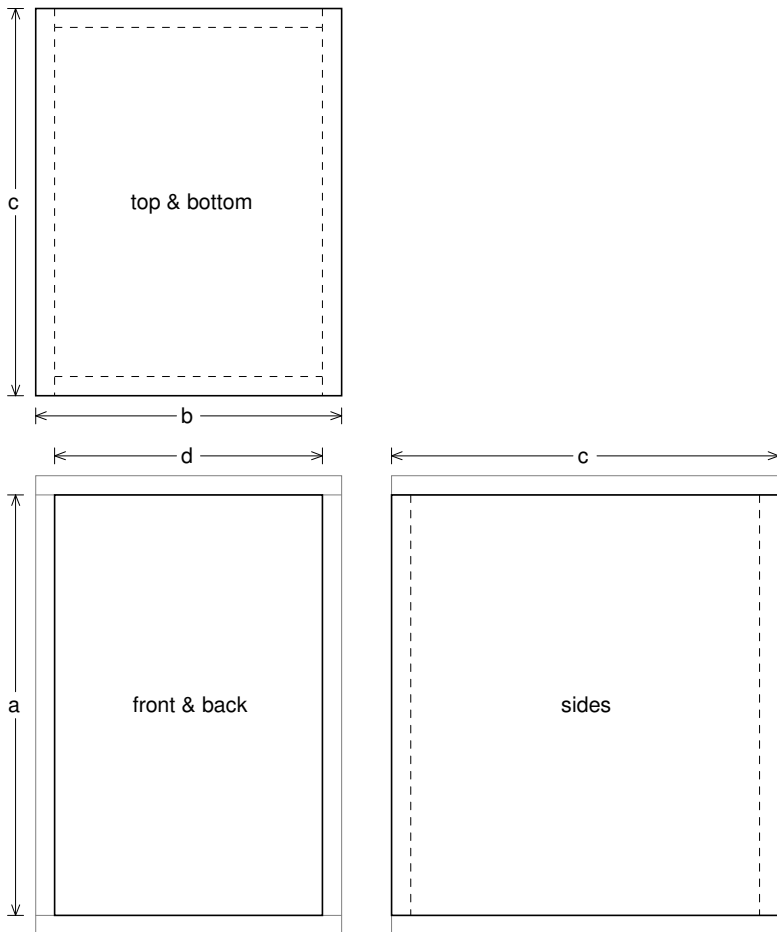
Qes = 0.797

Re = 2.006 ohms

Le = 2.505 mH

Z = 2.408 ohms

Pe = 1200 watts



Box Parts

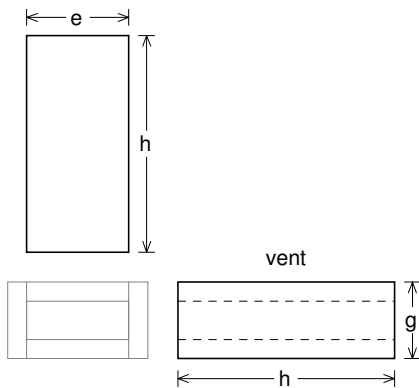
Box Shape: Square Prism

- 1 Top, 1 Bottom: depth (c) = 15.2 in
width (b) = 12, thickness = 0.75 in
- 1 Front, 1 Back: height (a) = 16.5 in
width (d) = 10.5, thickness = 0.75 in
- 2 Sides: height (a) = 16.5 in
depth (c) = 15.2, thickness = 0.75 in

--Driver Mounting--
Mounting: Front

--Vent Parts--

- 1 Top, 1 Bottom:
width (e) = 4, length (h) = 8.5 in
thickness = 0.75 in
- 2 Sides:
height (g) = 3, length (h) = 8.5 in
thickness = 0.75 in





Wiring Diagram

