

Box Properties

--Description--

Name:

Type: Closed Box

Shape: Prism, square

--Box Parameters--

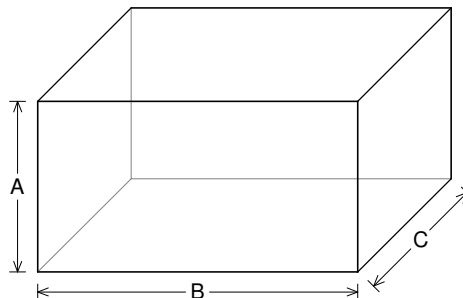
Vb = 2.966 cu.ft

V(total) = 3.587 cu.ft

Qtc = 0.51

F3 = 45.93 Hz

Fill = none



--External Dimensions--

A = 16 in

B = 30 in

C = 16.5 in

--Internal Dimensions--

A = 14.5 in

B = 28.5 in

C = 15 in

--Wall Thickness--

Front = 0.75 in

Side = 0.75 in

Driver Properties

--Description--

Name: XX 12 D4

Type: Standard one-way driver

Company: RE Audio (2015)

--Configuration--

No. of Drivers = 2

Mounting = Standard

Wiring = Parallel

Drivers sum coherently = Yes

Dual voice coils = parallel

--Driver Parameters--

Fs = 26.1 Hz

Qms = 6.078

Vas = 1.157 cu.ft [2.313]

Xmax = 1.9 in

Sd = 74.88 sq.in [149.8]

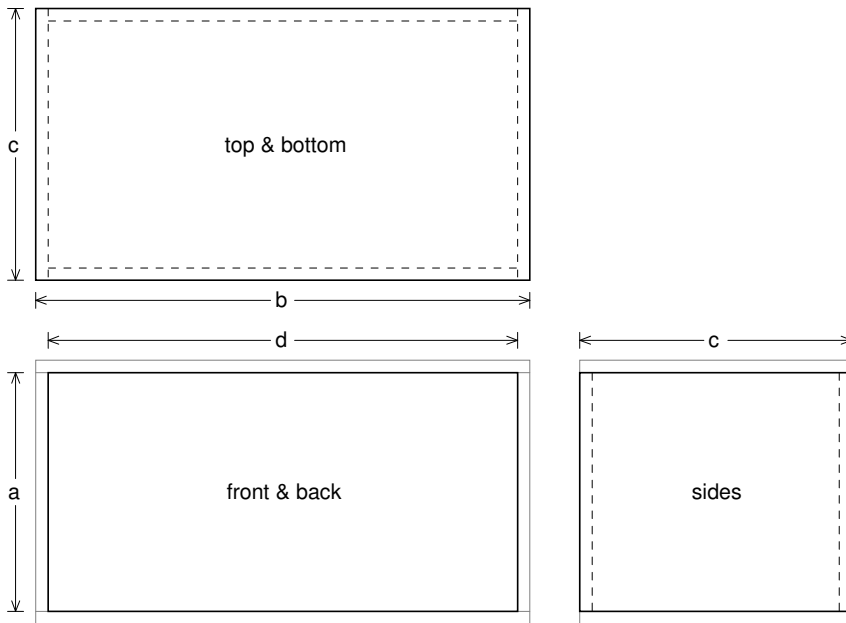
Qes = 0.421

Re = 1.519 ohms [0.759]

Le = 1.951 mH [0.975]

Z = 1.822 ohms [0.911]

Pe = 1500 watts [3000]



Box Parts

Box Shape: Square Prism

- 1 Top, 1 Bottom: depth (c) = 16.5 in
width (b) = 30, thickness = 0.75 in
- 1 Front, 1 Back: height (a) = 14.5 in
width (d) = 28.5, thickness = 0.75 in
- 2 Sides: height (a) = 14.5 in
depth (c) = 16.5, thickness = 0.75 in

--Driver Mounting--

Mounting: Front

Aim: All drivers face same direction



Wiring Diagram

