

## Box Properties

### --Description--

Name:

Type: Vented Box

Shape: Prism, square

### --Box Parameters--

Vb = 2.989 cu.ft

V(total) = 3.751 cu.ft

Fb = 30.03 Hz

F3 = 25.91 Hz

Fill = none

### --Vents--

No. of Vents = 1

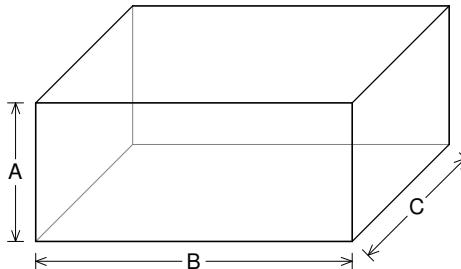
Vent shape = rectangle

Vent ends = one flush

Hv = 6 in

Wv = 2 in

Lv = 10 in



### --External Dimensions--

A = 14 in

B = 32 in

C = 18.5 in

### --Internal Dimensions--

A = 12.5 in

B = 30.5 in

C = 17 in

### --Wall Thickness--

Front = 0.75 in

Side = 0.75 in

## Driver Properties

### --Description--

Name: XX 12 D4

Type: Standard one-way driver

Company: RE Audio (2015)

### --Configuration--

**No. of Drivers = 2**

Mounting = Standard

Wiring = Parallel

Drivers sum coherently = Yes

Dual voice coils = parallel

### --Driver Parameters--

Fs = 26.1 Hz

Qms = 6.078

Vas = 1.157 cu.ft [2.313]

Xmax = 1.9 in

Sd = 74.88 sq.in [149.8]

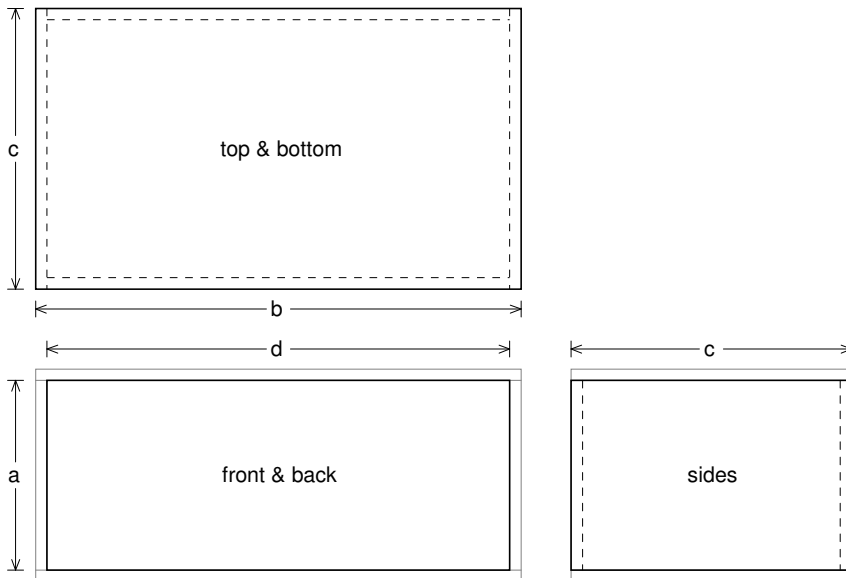
Qes = 0.421

Re = 1.519 ohms [0.759]

Le = 1.951 mH [0.975]

Z = 1.822 ohms [0.911]

Pe = 1500 watts [3000]



**Box Parts**

Box Shape: Square Prism

- 1 Top, 1 Bottom: depth (c) = 18.5 in  
width (b) = 32, thickness = 0.75 in
- 1 Front, 1 Back: height (a) = 12.5 in  
width (d) = 30.5, thickness = 0.75 in
- 2 Sides: height (a) = 12.5 in  
depth (c) = 18.5, thickness = 0.75 in

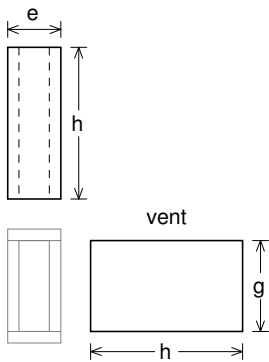
--Driver Mounting--

Mounting: Front

Aim: All drivers face same direction

--Vent Parts--

- 1 Top, 1 Bottom:  
width (e) = 3.5, length (h) = 10 in  
thickness = 0.75 in
- 2 Sides:  
height (g) = 6, length (h) = 10 in  
thickness = 0.75 in





### Wiring Diagram

