

Box Properties

--Description--

Name:

Type: Vented Box

Shape: Prism, square

--Box Parameters--

Vb = 2.022 cu.ft

V(total) = 2.215 cu.ft

Fb = 34.89 Hz

F3 = 32.64 Hz

Fill = none

--Vents--

No. of Vents = 1

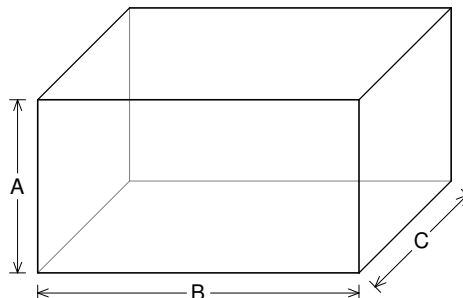
Vent shape = rectangle

Vent ends = one flush

Hv = 5 in

Wv = 2 in

Lv = 9 in



--External Dimensions--

A = 14 in

B = 26 in

C = 14 in

--Internal Dimensions--

A = 12.5 in

B = 24.5 in

C = 12.5 in

--Wall Thickness--

Front = 0.75 in

Side = 0.75 in

Driver Properties

--Description--

Name: REX 10 S4

Type: Standard one-way driver

Company: RE Audio (2015)

--Configuration--

No. of Drivers = 2

Mounting = Standard

Wiring = Parallel

Drivers sum coherently = Yes

--Driver Parameters--

Fs = 24.35 Hz

Qms = 6.092

Vas = 2.021 cu.ft [4.042]

Xmax = 0.6 in

Sd = 56.8 sq.in [113.6]

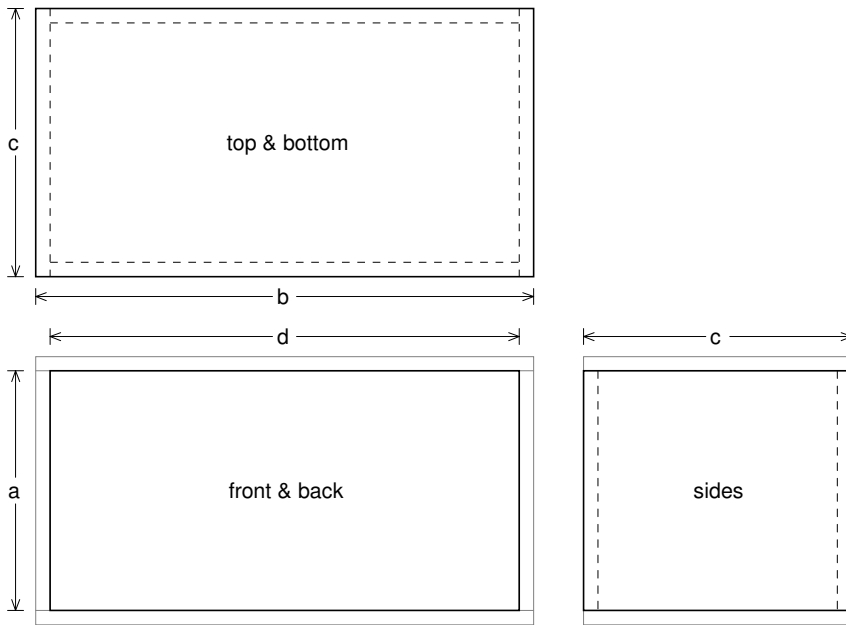
Qes = 0.492

Re = 3.825 ohms [1.913]

Le = 4.968 mH [2.484]

Z = 4.59 ohms [2.295]

Pe = 200 watts [400]



Box Parts

Box Shape: Square Prism

- 1 Top, 1 Bottom: depth (c) = 14 in
width (b) = 26, thickness = 0.75 in
- 1 Front, 1 Back: height (a) = 12.5 in
width (d) = 24.5, thickness = 0.75 in
- 2 Sides: height (a) = 12.5 in
depth (c) = 14, thickness = 0.75 in

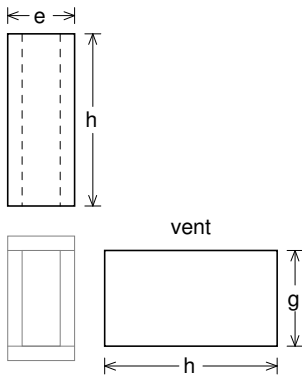
--Driver Mounting--

Mounting: Front

Aim: All drivers face same direction

--Vent Parts--

- 1 Top, 1 Bottom:
width (e) = 3.5, length (h) = 9 in
thickness = 0.75 in
- 2 Sides:
height (g) = 5, length (h) = 9 in
thickness = 0.75 in





Wiring Diagram

