



Box Properties

--Description--

Name:

Type: Vented Box

Shape: Prism, square

--Box Parameters--

Vb = 1.292 cu.ft

V(total) = 1.436 cu.ft

Fb = 40.55 Hz

F3 = 34.43 Hz

Fill = none

--Vents--

No. of Vents = 1

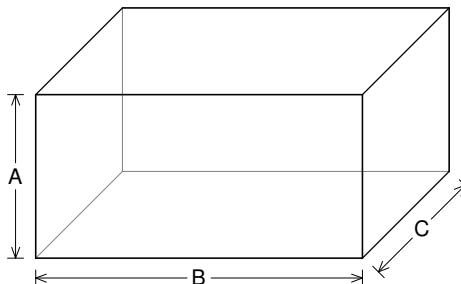
Vent shape = rectangle

Vent ends = one flush

Hv = 5 in

Wv = 1.5 in

Lv = 8 in



--External Dimensions--

A = 12 in

B = 24 in

C = 12 in

--Internal Dimensions--

A = 10.5 in

B = 22.5 in

C = 10.5 in

--Wall Thickness--

Front = 0.75 in

Side = 0.75 in

Driver Properties

--Description--

Name: REX 8 S4

Type: Standard one-way driver

Company: RE Audio (2015)

--Configuration--

No. of Drivers = 2

Mounting = Standard

Wiring = Parallel

Drivers sum coherently = Yes

--Driver Parameters--

Fs = 19.8 Hz

Qms = 5.297

Vas = 1.484 cu.ft [2.968]

Xmax = 0.6 in

Sd = 34.36 sq.in [68.73]

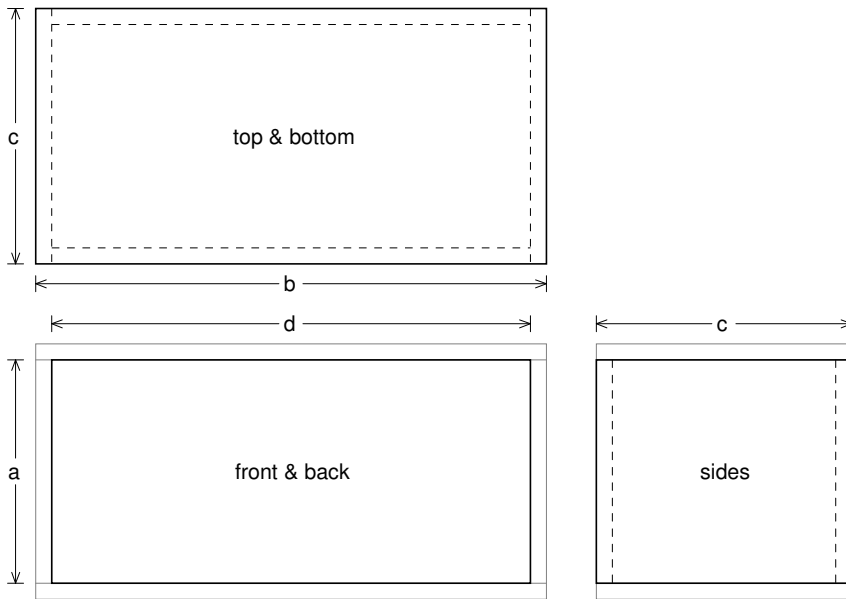
Qes = 0.259

Re = 3.463 ohms [1.731]

Le = 6.504 mH [3.252]

Z = 4.155 ohms [2.078]

Pe = 200 watts [400]



Box Parts

Box Shape: Square Prism

- 1 Top, 1 Bottom: depth (c) = 12 in
width (b) = 24, thickness = 0.75 in
- 1 Front, 1 Back: height (a) = 10.5 in
width (d) = 22.5, thickness = 0.75 in
- 2 Sides: height (a) = 10.5 in
depth (c) = 12, thickness = 0.75 in

--Driver Mounting--

Mounting: Front

Aim: All drivers face same direction

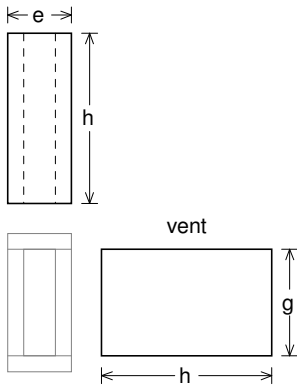
--Vent Parts--

1 Top, 1 Bottom:

- width (e) = 3, length (h) = 8 in
- thickness = 0.75 in

2 Sides:

- height (g) = 5, length (h) = 8 in
- thickness = 0.75 in





Wiring Diagram

