



Box Properties

--Description--

Name:

Type: Closed Box

Shape: Prism, square

--Box Parameters--

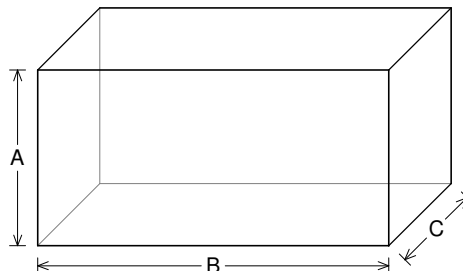
Vb = 0.743 cu.ft

V(total) = 0.889 cu.ft

Qtc = 0.91

F3 = 42.96 Hz

Fill = none



--External Dimensions--

A = 12 in

B = 24 in

C = 8 in

--Internal Dimensions--

A = 10.5 in

B = 22.5 in

C = 6.5 in

--Wall Thickness--

Front = 0.75 in

Side = 0.75 in

Driver Properties

--Description--

Name: SCX 10 D4

Type: Standard one-way driver

Company: RE Audio (2015)

--Configuration--

No. of Drivers = 2

Mounting = Standard

Wiring = Parallel

Drivers sum coherently = Yes

Dual voice coils = parallel

--Driver Parameters--

Fs = 28.65 Hz

Qms = 5.606

Vas = 0.774 cu.ft [1.548]

Xmax = 1 in

Sd = 49.67 sq.in [99.35]

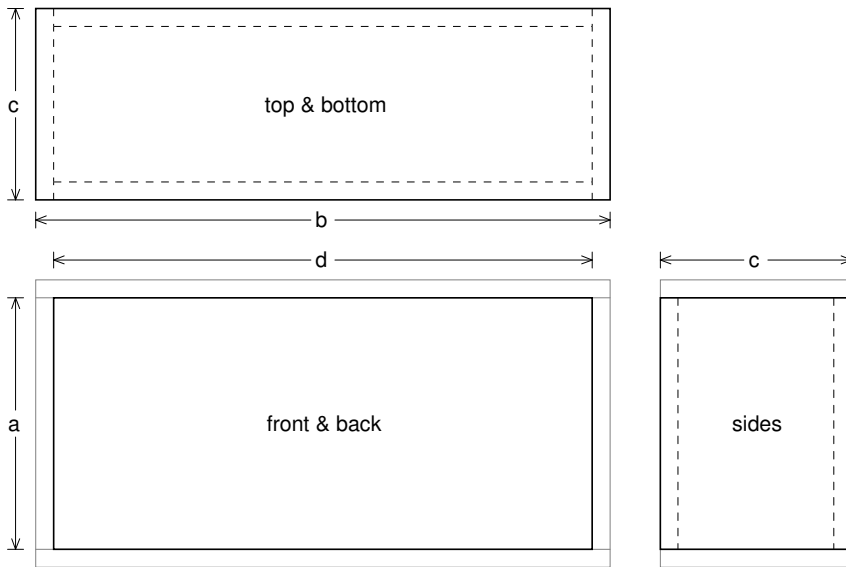
Qes = 0.602

Re = 1.856 ohms [0.928]

Le = 1.609 mH [0.804]

Z = 2.228 ohms [1.114]

Pe = 450 watts [900]



Box Parts

Box Shape: Square Prism

- 1 Top, 1 Bottom: depth (c) = 8 in
width (b) = 24, thickness = 0.75 in
- 1 Front, 1 Back: height (a) = 10.5 in
width (d) = 22.5, thickness = 0.75 in
- 2 Sides: height (a) = 10.5 in
depth (c) = 8, thickness = 0.75 in

--Driver Mounting--

Mounting: Front

Aim: All drivers face same direction



Wiring Diagram

