

Box Properties

--Description--

Name:

Type: Vented Box

Shape: Prism, square

--Box Parameters--

Vb = 2.01 cu.ft

V(total) = 2.317 cu.ft

Fb = 39.82 Hz

F3 = 33.58 Hz

Fill = none

--Vents--

No. of Vents = 1

Vent shape = rectangle

Vent ends = one flush

Hv = 6 in

Wv = 2 in

Lv = 8 in



--External Dimensions--

A = 14 in

B = 32 in

C = 12 in

--Internal Dimensions--

A = 12.5 in

B = 30.5 in

C = 10.5 in

--Wall Thickness--

Front = 0.75 in

Side = 0.75 in

Driver Properties

--Description--

Name: SCX 12 D4

Type: Standard one-way driver

Company: RE Audio (2015)

--Configuration--

No. of Drivers = 2

Mounting = Standard

Wiring = Parallel

Drivers sum coherently = Yes

Dual voice coils = parallel

--Driver Parameters--

Fs = 24.64 Hz

Qms = 5.489

Vas = 1.859 cu.ft [3.719]

Xmax = 1 in

Sd = 76.1 sq.in [152.2]

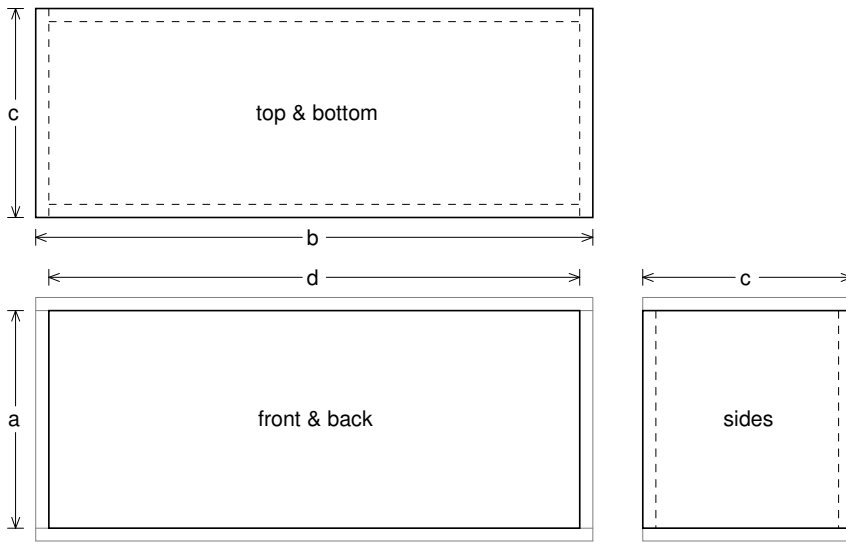
Qes = 0.611

Re = 1.771 ohms [0.885]

Le = 1.527 mH [0.763]

Z = 2.125 ohms [1.063]

Pe = 450 watts [900]



Box Parts

Box Shape: Square Prism

- 1 Top, 1 Bottom: depth (c) = 12 in
width (b) = 32, thickness = 0.75 in
- 1 Front, 1 Back: height (a) = 12.5 in
width (d) = 30.5, thickness = 0.75 in
- 2 Sides: height (a) = 12.5 in
depth (c) = 12, thickness = 0.75 in

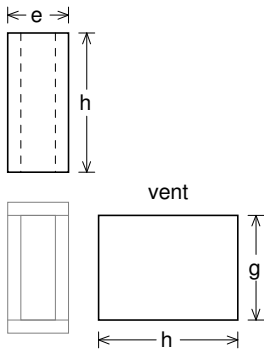
--Driver Mounting--

Mounting: Front

Aim: All drivers face same direction

--Vent Parts--

- 1 Top, 1 Bottom:
width (e) = 3.5, length (h) = 8 in
thickness = 0.75 in
- 2 Sides:
height (g) = 6, length (h) = 8 in
thickness = 0.75 in





Wiring Diagram

