

Box Properties

--Description--

Name:

Type: Vented Box

Shape: Prism, square

--Box Parameters--

Vb = 1.402 cu.ft

V(total) = 1.691 cu.ft

Fb = 39.3 Hz

F3 = 33.48 Hz

Fill = none

--Vents--

No. of Vents = 1

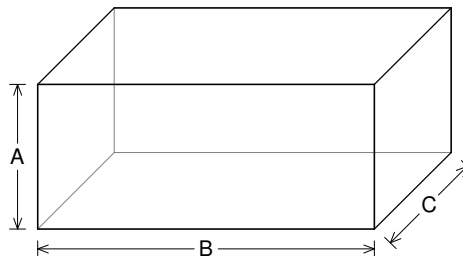
Vent shape = rectangle

Vent ends = one flush

Hv = 6 in

Wv = 1.5 in

Lv = 9.718 in



--External Dimensions--

A = 12 in

B = 28 in

C = 12 in

--Internal Dimensions--

A = 10.5 in

B = 26.5 in

C = 10.5 in

--Wall Thickness--

Front = 0.75 in

Side = 0.75 in

Driver Properties

--Description--

Name: SEX 10 D4

Type: Standard one-way driver

Company: RE Audio (2015)

--Configuration--

No. of Drivers = 2

Mounting = Standard

Wiring = Parallel

Drivers sum coherently = Yes

Dual voice coils = parallel

--Driver Parameters--

Fs = 40.03 Hz

Qms = 6.291

Vas = 0.475 cu.ft [0.95]

Xmax = 1.102 in

Sd = 50.17 sq.in [100.3]

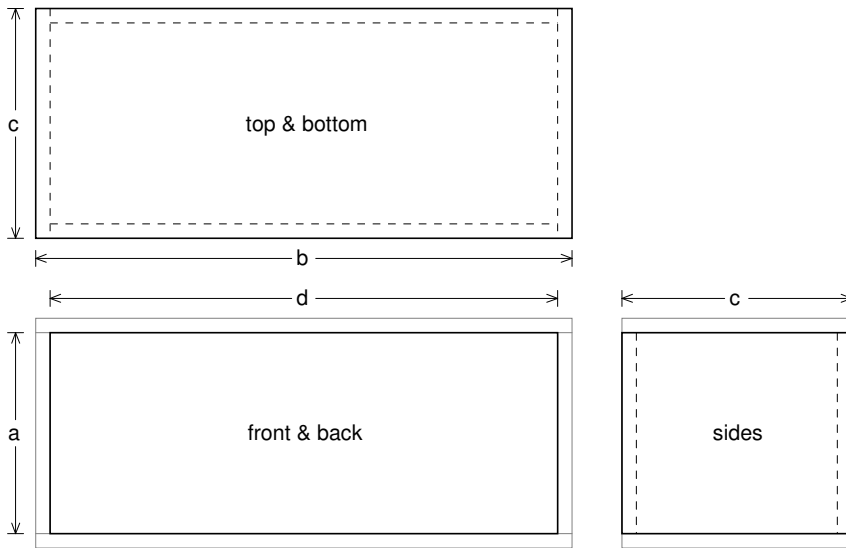
Qes = 0.583

Re = 1.409 ohms [0.705]

Le = 1.324 mH [0.662]

Z = 1.691 ohms [0.845]

Pe = 750 watts [1500]



Box Parts

Box Shape: Square Prism

- 1 Top, 1 Bottom: depth (c) = 12 in
width (b) = 28, thickness = 0.75 in
- 1 Front, 1 Back: height (a) = 10.5 in
width (d) = 26.5, thickness = 0.75 in
- 2 Sides: height (a) = 10.5 in
depth (c) = 12, thickness = 0.75 in

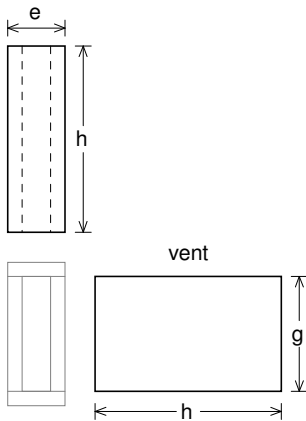
--Driver Mounting--

Mounting: Front

Aim: All drivers face same direction

--Vent Parts--

- 1 Top, 1 Bottom:
width (e) = 3, length (h) = 9.718 in
thickness = 0.75 in
- 2 Sides:
height (g) = 6, length (h) = 9.718 in
thickness = 0.75 in





Wiring Diagram

