

Box Properties

--Description--

Name:

Type: Closed Box

Shape: Prism, square

--Box Parameters--

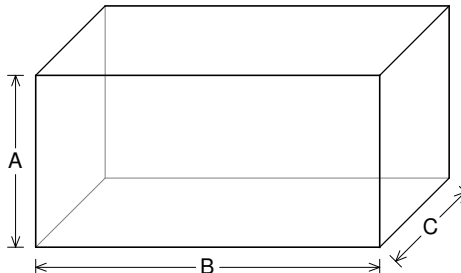
Vb = 2.5 cu.ft

V(total) = 2.726 cu.ft

Qtc = 0.891

F3 = 44.75 Hz

Fill = none



--External Dimensions--

A = 16 in

B = 32 in

C = 12.15 in

--Internal Dimensions--

A = 14.5 in

B = 30.5 in

C = 10.65 in

--Wall Thickness--

Front = 0.75 in

Side = 0.75 in

Driver Properties

--Description--

Name: SEX 12 D4

Type: Standard one-way driver

Company: RE Audio (2015)

--Configuration--

No. of Drivers = 2

Mounting = Standard

Wiring = Parallel

Drivers sum coherently = Yes

Dual voice coils = parallel

--Driver Parameters--

Fs = 38.19 Hz

Qms = 6.107

Vas = 1.052 cu.ft [2.103]

Xmax = 1.1 in

Sd = 76.09 sq.in [152.2]

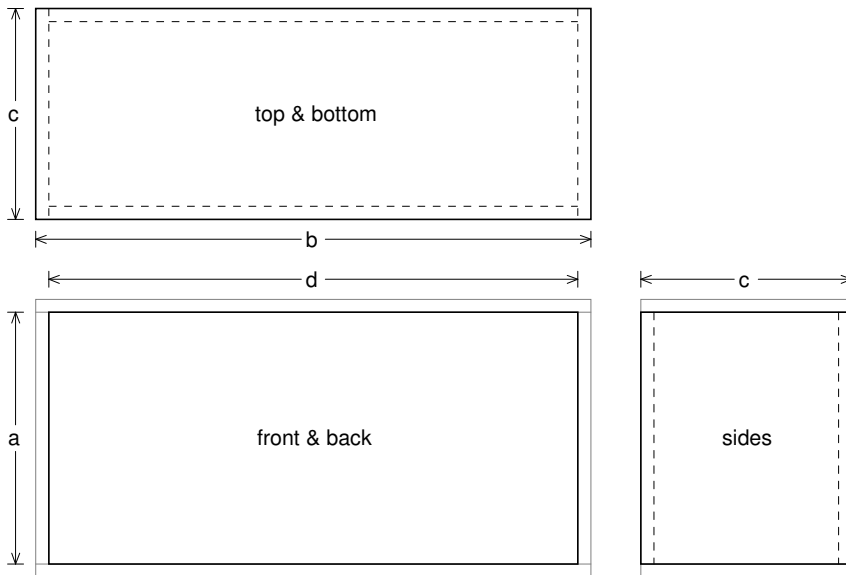
Qes = 0.781

Re = 2.021 ohms [1.01]

Le = 1.746 mH [0.873]

Z = 2.425 ohms [1.212]

Pe = 750 watts [1500]



Box Parts

Box Shape: Square Prism

1 Top, 1 Bottom: depth (c) = 12.15 in
width (b) = 32, thickness = 0.75 in

1 Front, 1 Back: height (a) = 14.5 in
width (d) = 30.5, thickness = 0.75 in

2 Sides: height (a) = 14.5 in
depth (c) = 12.15, thickness = 0.75 in

--Driver Mounting--

Mounting: Front

Aim: All drivers face same direction



Wiring Diagram

