



### Box Properties

--Description--

Name:

Type: Closed Box

Shape: Prism, square

--Box Parameters--

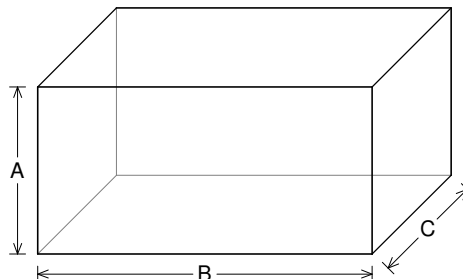
Vb = 3.974 cu.ft

V(total) = 4.777 cu.ft

Qtc = 0.663

F3 = 39.13 Hz

Fill = none



--External Dimensions--

A = 18 in

B = 36 in

C = 16 in

--Internal Dimensions--

A = 16.5 in

B = 34.5 in

C = 14.5 in

--Wall Thickness--

Front = 0.75 in

Side = 0.75 in

### Driver Properties

--Description--

Name: XX 15 D4

Type: Standard one-way driver

Company: RE Audio (2015)

--Configuration--

**No. of Drivers = 2**

Mounting = Standard

Wiring = Parallel

Drivers sum coherently = Yes

Dual voice coils = parallel

--Driver Parameters--

Fs = 22.23 Hz

Qms = 6.139

Vas = 3.592 cu.ft [7.185]

Xmax = 1.9 in

Sd = 128.6 sq.in [257.2]

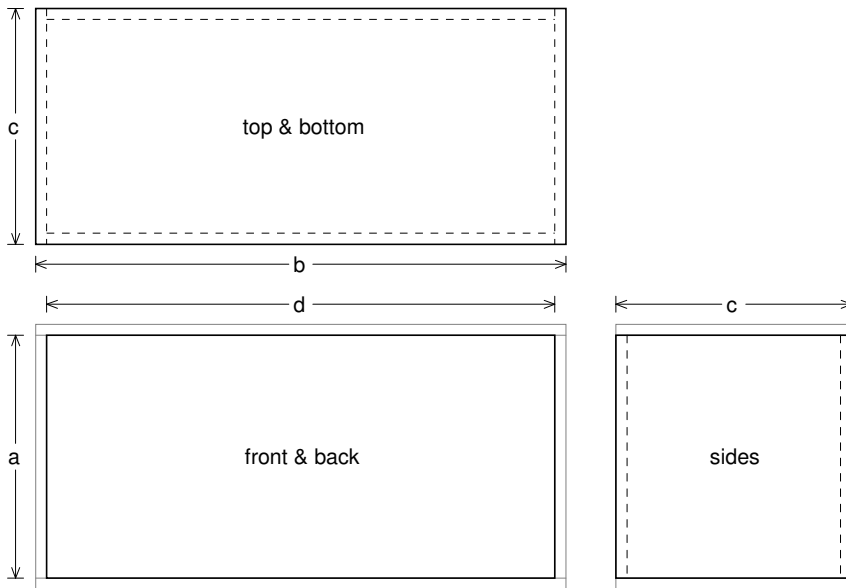
Qes = 0.444

Re = 1.512 ohms [0.756]

Le = 2.079 mH [1.039]

Z = 1.814 ohms [0.907]

Pe = 1500 watts [3000]



### Box Parts

Box Shape: Square Prism

- 1 Top, 1 Bottom: depth (c) = 16 in  
width (b) = 36, thickness = 0.75 in
- 1 Front, 1 Back: height (a) = 16.5 in  
width (d) = 34.5, thickness = 0.75 in
- 2 Sides: height (a) = 16.5 in  
depth (c) = 16, thickness = 0.75 in

--Driver Mounting--

Mounting: Front

Aim: All drivers face same direction



### Wiring Diagram

