

## Box Properties

--Description--

Name:

Type: Vented Box

Shape: Prism, square

--Box Parameters--

Vb = 2.771 cu.ft

V(total) = 3.751 cu.ft

Fb = 30.05 Hz

F3 = 26.83 Hz

Fill = none

--Vents--

No. of Vents = 1

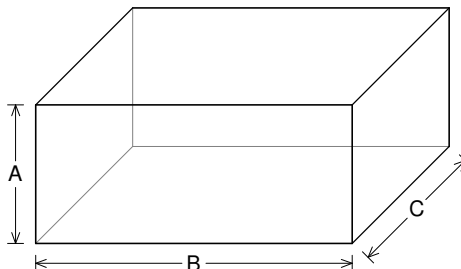
Vent shape = rectangle

Vent ends = one flush

Hv = 6 in

Wv = 2 in

Lv = 11 in



--External Dimensions--

A = 14 in

B = 32 in

C = 18.5 in

--Internal Dimensions--

A = 12.5 in

B = 30.5 in

C = 17 in

--Wall Thickness--

Front = 0.75 in

Side = 0.75 in

## Driver Properties

--Description--

Name: XXX 12 D4

Type: Standard one-way driver

Company: RE Audio (2015)

--Configuration--

**No. of Drivers = 2**

Mounting = Standard

Wiring = Parallel

Drivers sum coherently = Yes

Dual voice coils = parallel

--Driver Parameters--

Fs = 24.54 Hz

Qms = 6.503

Vas = 1.234 cu.ft [2.468]

Xmax = 2.3 in

Sd = 74.88 sq.in [149.8]

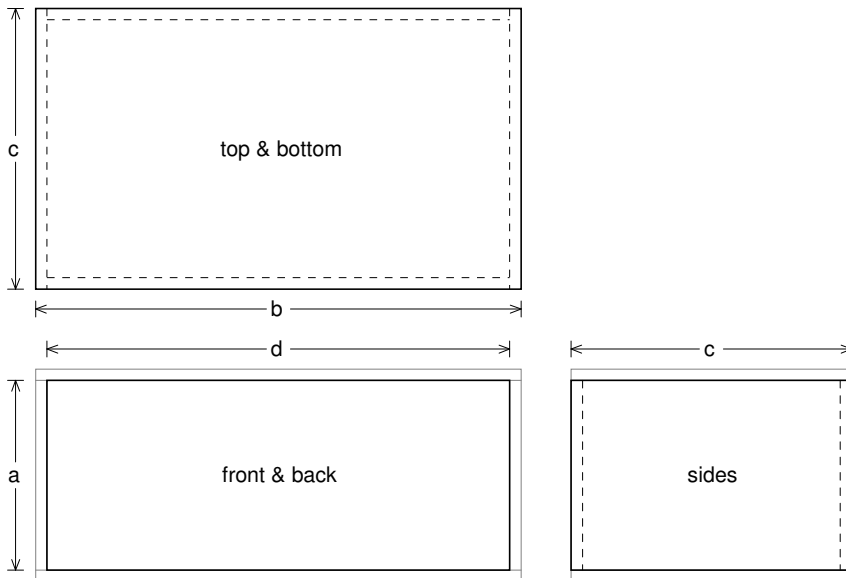
Qes = 0.315

Re = 1.743 ohms [0.872]

Le = 2.012 mH [1.006]

Z = 2.092 ohms [1.046]

Pe = 2000 watts [4000]



**Box Parts**

Box Shape: Square Prism

- 1 Top, 1 Bottom: depth (c) = 18.5 in  
width (b) = 32, thickness = 0.75 in
- 1 Front, 1 Back: height (a) = 12.5 in  
width (d) = 30.5, thickness = 0.75 in
- 2 Sides: height (a) = 12.5 in  
depth (c) = 18.5, thickness = 0.75 in

--Driver Mounting--

Mounting: Front

Aim: All drivers face same direction

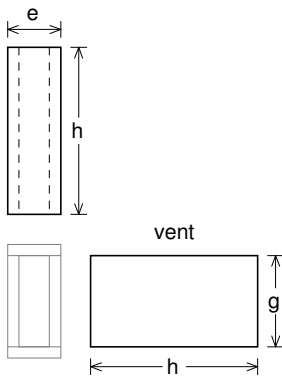
--Vent Parts--

1 Top, 1 Bottom:

width (e) = 3.5, length (h) = 11 in  
thickness = 0.75 in

2 Sides:

height (g) = 6, length (h) = 11 in  
thickness = 0.75 in





### Wiring Diagram

