

## Box Properties

### --Description--

Name:

Type: Vented Box

Shape: Prism, square

### --Box Parameters--

Vb = 2.753 cu.ft

V(total) = 3.545 cu.ft

Fb = 30.51 Hz

F3 = 26.85 Hz

Fill = none

### --Vents--

No. of Vents = 1

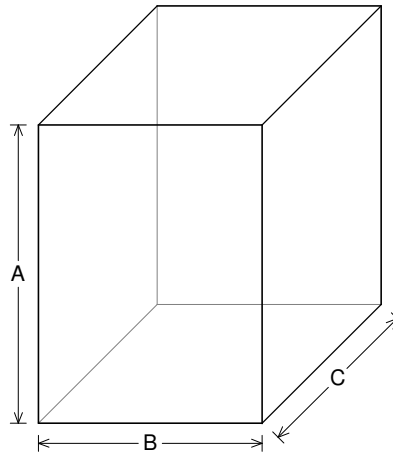
Vent shape = rectangle

Vent ends = one flush

Hv = 2 in

Wv = 8 in

Lv = 15 in



### --External Dimensions--

A = 24 in

B = 18 in

C = 18 in

### --Internal Dimensions--

A = 22.5 in

B = 16.5 in

C = 16.5 in

### --Wall Thickness--

Front = 0.75 in

Side = 0.75 in

## Driver Properties

### --Description--

Name: XXX 15 D4

Type: Standard one-way driver

Company: RE Audio (2015)

### --Configuration--

**No. of Drivers = 1**

Dual voice coils = parallel

### --Driver Parameters--

Fs = 21.52 Hz

Qms = 6.401

Vas = 3.837 cu.ft

Xmax = 2.3 in

Sd = 128.6 sq.in

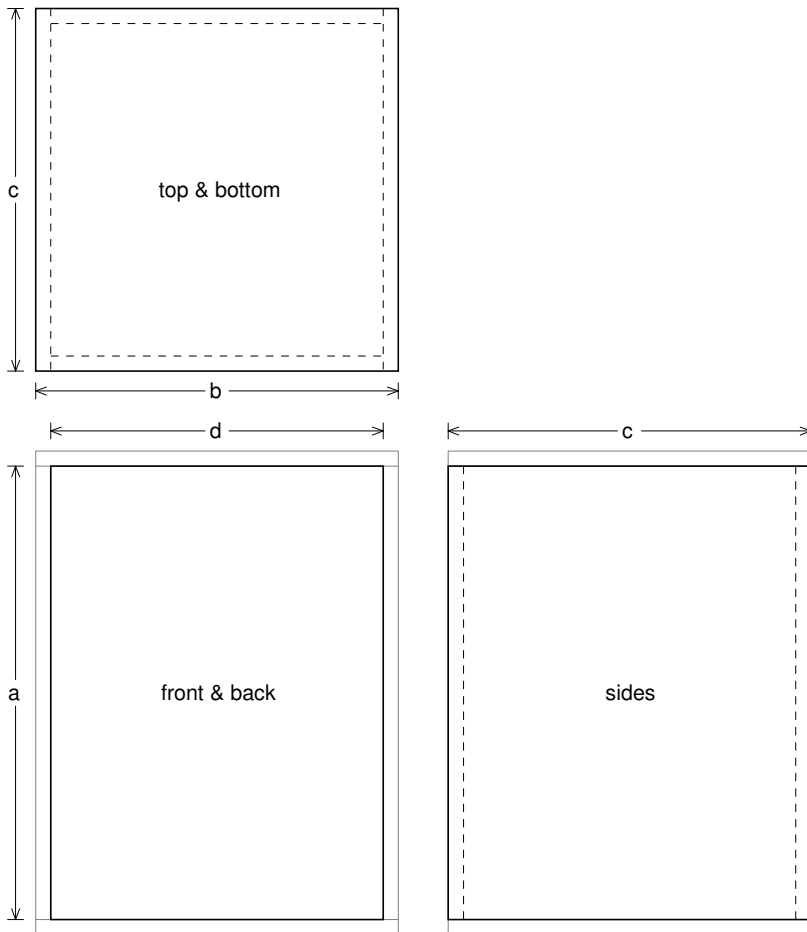
Qes = 0.38

Re = 1.716 ohms

Le = 2.017 mH

Z = 2.059 ohms

Pe = 2000 watts



### Box Parts

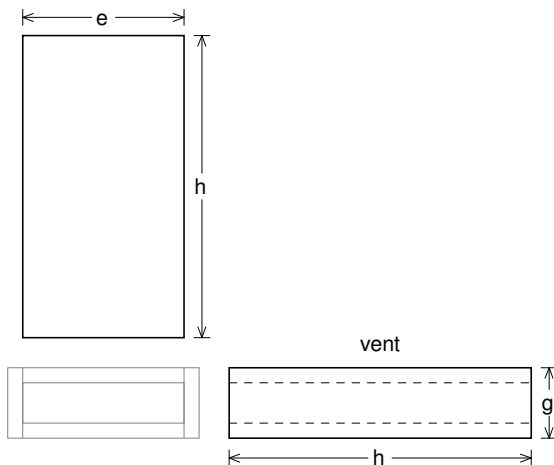
Box Shape: Square Prism

- 1 Top, 1 Bottom: depth ( $c$ ) = 18 in  
width ( $b$ ) = 18, thickness = 0.75 in
- 1 Front, 1 Back: height ( $a$ ) = 22.5 in  
width ( $d$ ) = 16.5, thickness = 0.75 in
- 2 Sides: height ( $a$ ) = 22.5 in  
depth ( $c$ ) = 18, thickness = 0.75 in

--Driver Mounting--  
Mounting: Front

--Vent Parts--

- 1 Top, 1 Bottom:  
width ( $e$ ) = 8, length ( $h$ ) = 15 in  
thickness = 0.75 in
- 2 Sides:  
height ( $g$ ) = 3.5, length ( $h$ ) = 15 in  
thickness = 0.75 in





### Wiring Diagram

